

32 OR 64 BIT OUTLOOK?

How to find out the bit version of your Outlook installation.

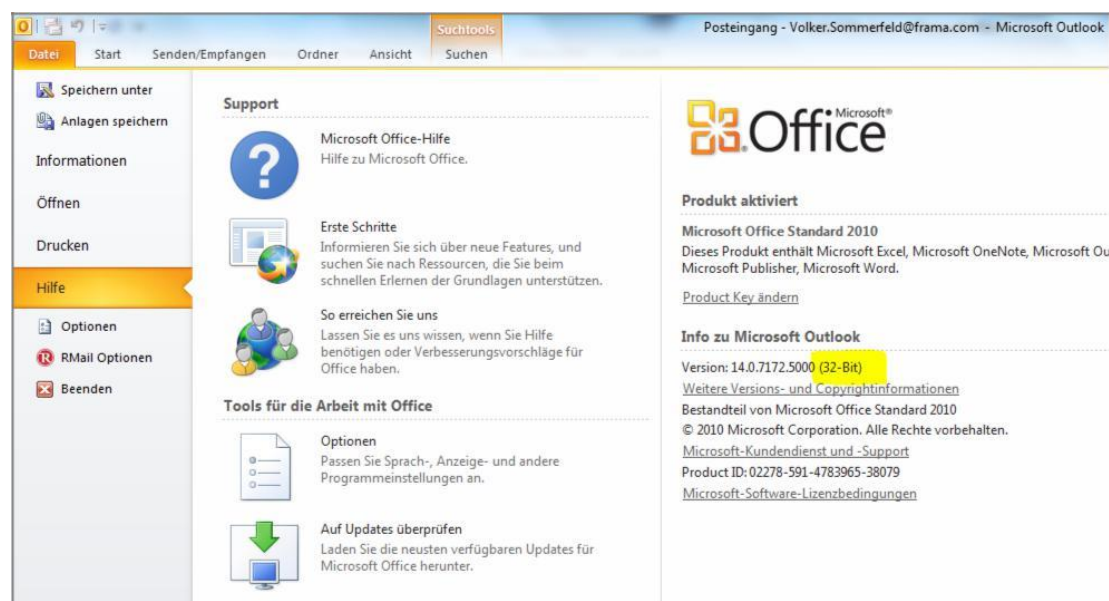
The RMail plug-in requires the correct bit version of the MS Office package, not the operating system. **Microsoft Outlook versions 2000, 2002, XP, 2003 and 2007 are always 32 bit versions.**

Problem: How to determine the bit version of MS Office?

Solution: Follow these steps:

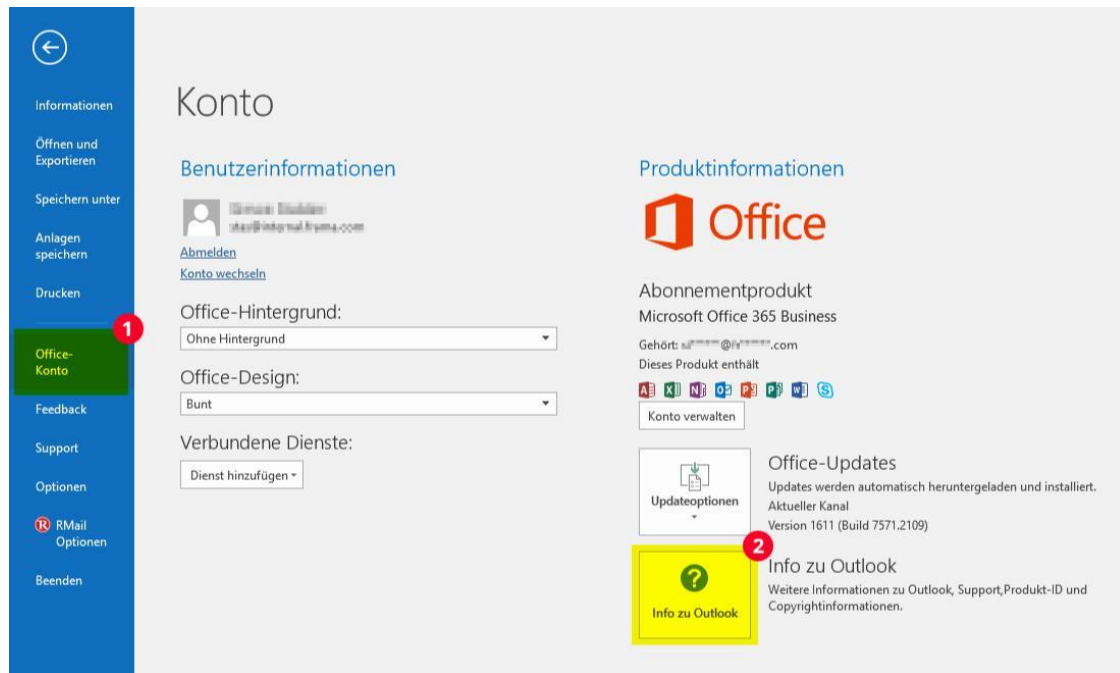
Outlook 2010

1. Open Outlook and click File -> Help.
2. The bit version is displayed (32-bit or 64-bit).



Outlook 2013 / 2016

1. Open Outlook and click File -> Office Account -> Outlook Info.



2. The bit version is displayed (32-bit or 64-bit).

